

# CITY OF MIAMI BEACH- NEIGHBORHOOD 6 - OCEANFRONT: CAPITAL IMPROVEMENTS PROGRAM

---

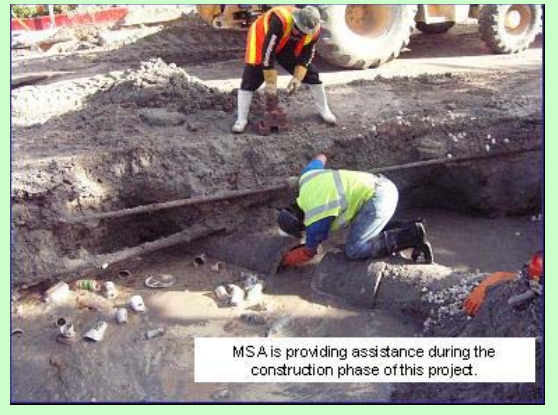
**Client Name:** *City of Miami Beach/Edaw Inc. (Prime)*

**Type of Service:** *Civil Engineering & Permitting Services*

---

Milian, Swain and Associates, Inc. (MSA) is assisting Edaw, Inc. in providing engineering services to the City of Miami Beach for the Neighborhood 6 – Oceanfront: Capital improvements Program, specifically related to the design, permitting and construction phases of water distribution and street lighting system improvements within the limits of Miami Beach. MSA scope of services includes:

**Water & Electrical Design, Permitting & Construction:** MSA is designing new watermain extensions (approximately 5,500 lineal feet) within existing public roads and design the electrical system to serve new street lights. MSA is also responsible for the permitting process for all the above work. Specific tasks include:



## ***Preliminary Engineering***

- Attend design coordination (Kick off) meeting.
- Request surveys and utility as-builts used by others to generate the original existing conditions basemaps for the impacted roadway corridors.
- Review the as-built data received, determine sufficiency of the utility as-built data provided and if necessary inform the client on the need for supplemental utility exploration (soft digs) locating services to establish accurate horizontal and vertical alignment of existing underground utilities within the project area.

## ***Detailed Design***

- Prepare design drawings for new watermain extensions and related appurtenances (i.e. valves, fire hydrants, etc.) including connection of existing water services to the new watermains
- Prepare electrical design drawings showing the proposed electrical distribution system required to serve the new street lights. In addition, coordinate service points location with Florida Power & Light Co. (FPL) and indicate location of available power source.
- Prepare an Engineer's Opinion of Probable Construction Costs for the proposed water distribution and electrical system improvements.

## ***Regulatory Process***

- Assist the City of Miami Beach in obtaining approvals from the regulatory agencies. MSA will prepare permit packages/applications and make submittal to the following regulatory agencies:
  - City of Miami Beach Public Works Dept.
  - Miami Dade WASD
  - Florida Department of Transportation (FDOT)-District 6
  - City of Miami Beach Fire Dept.

## **CITY OF MIAMI BEACH- NEIGHBORHOOD 6 - OCEANFRONT: CAPITAL IMPROVEMENTS PROGRAM**

---

- Miami-Dade County DERM Water Supply Section
- Health Department

**Construction Management Assistance:** MSA is providing assistance during construction of the Paving, Grading, Drainage, Water Services and Street Lighting systems. Services include:

- Attend local pre-construction meeting with selected contractors and City representatives.
- Review shop drawings of the proposed Paving, Grading, Drainage, Water Services and Street Lighting systems improvements.
- Perform construction observations to observe the general status and progress of the work.
- Attend and participate in construction meetings with the Client, Contractors and City of Miami Beach representatives.
- Attend and participate in unscheduled/emergency project site visits/meetings during the construction phase.
- Review Requests for Change Order submitted by the Contractor and submit opinions and recommendations on said Change Order requests.
- Review and respond to Contractor's RFI's and issue clarification of the construction documents, if needed.
- Perform a Substantial Completion Construction observation of the proposed improvements, to ensure that the work completed meets the minimum requirements for substantial completion.